

Obsidian

Wausau Homes Catalog Number: WN115



FEATURED DESIGN OPTIONS

(Available for Quick Pricing Estimate) - See Pages 7.1, 7.2

- Main floor Pocket Office and Bedroom 1 closet re-configuration

Please send **Design Requests** to:
PlanningDesign@wausauhomes.com

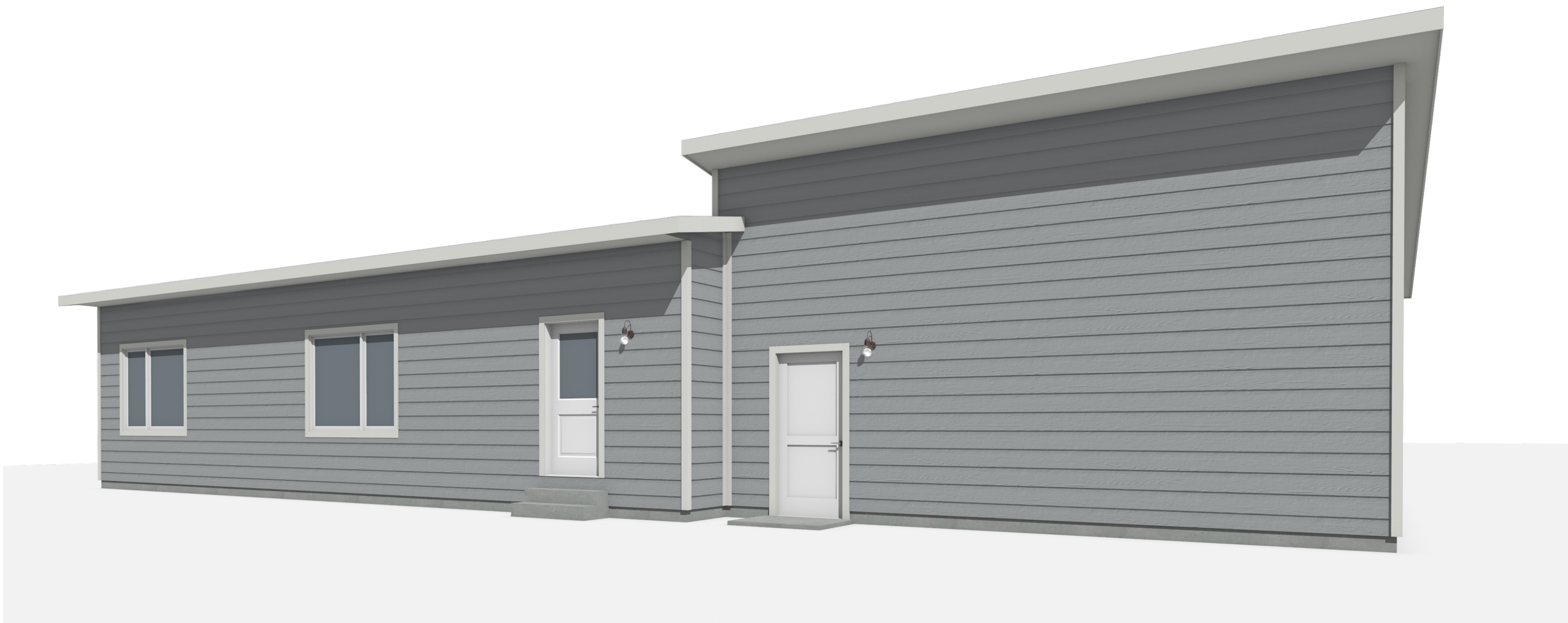
For **Pricing Inquiries**, Please Contact:
SalesSupport@wausauhomes.com

SALES DRAWING PAGES INDEX

Page #	Page Name	Description	(Comments)
P1	COVER PAGE		
P2	ELEVATIONS	Front & Right	
P3	ELEVATIONS	Rear & Left	
P4.1	FLOOR PLAN: Main Level		
P4.3	FLOOR PLAN: Lower Level		Design Suggestion Only - Lower Levels are not included in WH Framing Packages
P5	FOUNDATION PLAN		
P5.1	CONSTRUCTION DETAILS		
P6	BUILDING SECTION		
P7.1	DESIGN OPTIONS		Visuals of Featured Design Options
P7.2	DESIGN OPTIONS		Visuals of Featured Design Options

GENERAL NOTES:

1. This plan set is considered a preliminary design and is intended for communication of architectural ideas and concepts only.
2. Do not use the drawings provided for construction, permitting, engineering, final bidding, or for any use with other building trades.
3. Publishing or distributing these drawings as property of any persons or businesses other than Wausau Homes is prohibited under the design agreement.



Perspectives shown with default colors and materials.
Reference WH Homeowner Selection Guide for full selection of
finish materials and colors available through Wausau Homes.

IMPORTANT
PLAN SET VERSION IS NOT INTENDED FOR FINAL CONSTRUCTION



Obsidian

Wausau Homes Catalog Number: WN115

Wausau Homes Original Floor Plans

These drawings are protected under Wausau Homes, Inc.'s exclusive copyright and are provided under a limited license to the Wausau Homes builder reference. By accepting a copy of these drawings, you acknowledge and recognize Wausau Homes, Inc.'s exclusive copyright herein and agree not to display, distribute, reproduce, modify, or use these drawings other than for the construction of a single home by Wausau Homes.



PLANNING &
DESIGN

Send Design Requests to:
PlanningDesign@wausauhomes.com

For Pricing Inquiries:
SalesSupport@wausauhomes.com

SALES PLAN

Print Date:
4/8/2025

COVER PAGE

1/4" = 1'-0" (22X34)

P1

NOTES FROM THE DESIGNER:

- Some building locations may require 2x10 sub-fascia to conceal top chords of Truss Design.

- 2/12 roof pitch limits some roofing material applications. Consider 3/12 if standard shingles are desired.

BUILDER SPECIFICATIONS

Preferred **Roof Pitch**(es) (General):

Preferred **Roof Overhang**(s)

Gables:

Eaves:

Preferred **Sub-Fascia Size**:

Preferred **Window Style** (General):
(Note any alternate window styles or grille locations on Elevations)

Preferred **Window Color**:

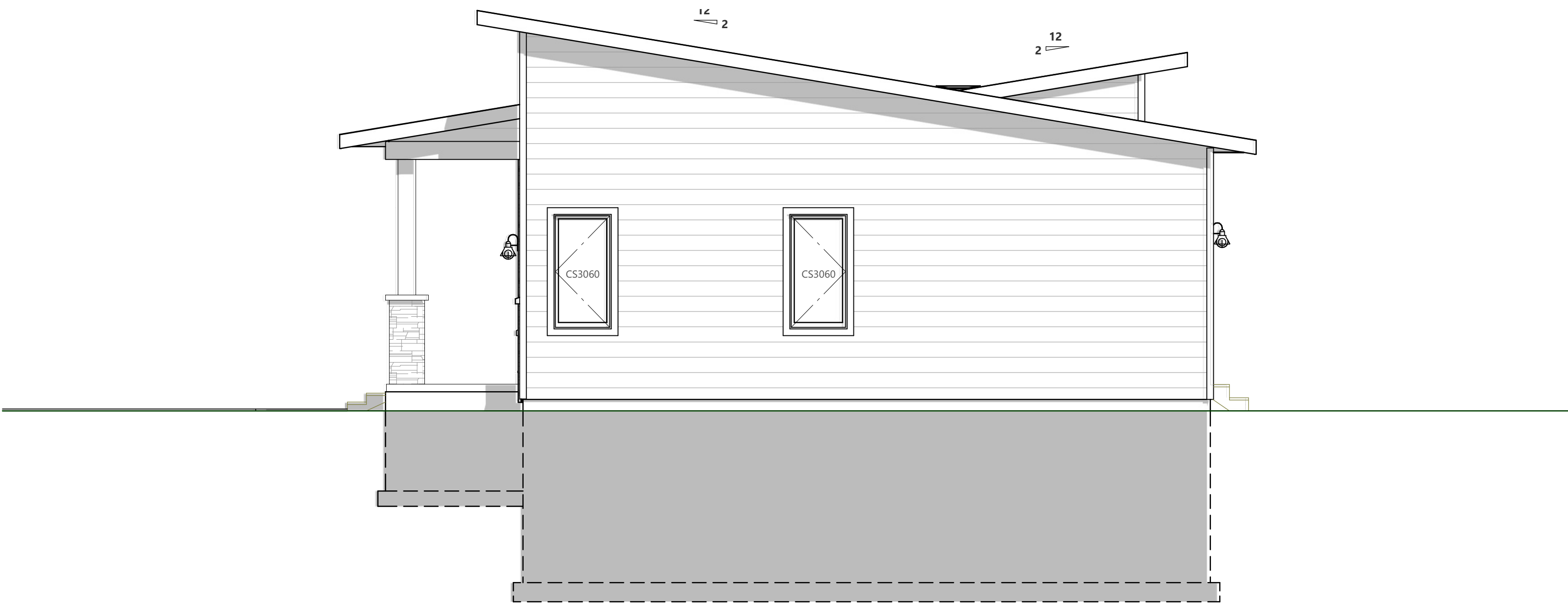
Preferred **Exterior Materials/Colors**:

(Please highlight and annotate desired locations on Elevations)

Other Notes:



FRONT ELEVATION



RIGHT ELEVATION

IMPORTANT
PLAN SET VERSION IS NOT INTENDED FOR FINAL CONSTRUCTION



Obsidian

Wausau Homes Catalog Number: WN115

Wausau Homes Original Floor Plans

These drawings are protected under Wausau Homes, Inc.'s exclusive copyright and are provided under a limited license to the Wausau Homes builder reference. By accepting a copy of these drawings, you acknowledge and recognize Wausau Homes Inc.'s exclusive copyright herein and agree not to display, distribute, reproduce, modify, or use these drawings other than for the construction of a single home by Wausau Homes.



PLANNING & DESIGN

Send Design Requests to:
PlanningDesign@wausauhomes.com

For Pricing Inquiries:
SalesSupport@wausauhomes.com

SALES PLAN

Print Date:
4/8/2025

ELEVATIONS
Front & Right

1/4" = 1'-0" (22X34)

P2

NOTES FROM THE DESIGNER:

BUILDER SPECIFICATIONS

Preferred **Roof Pitch(es)** (General):

Preferred **Roof Overhang(s)**
Gables:
Eaves:

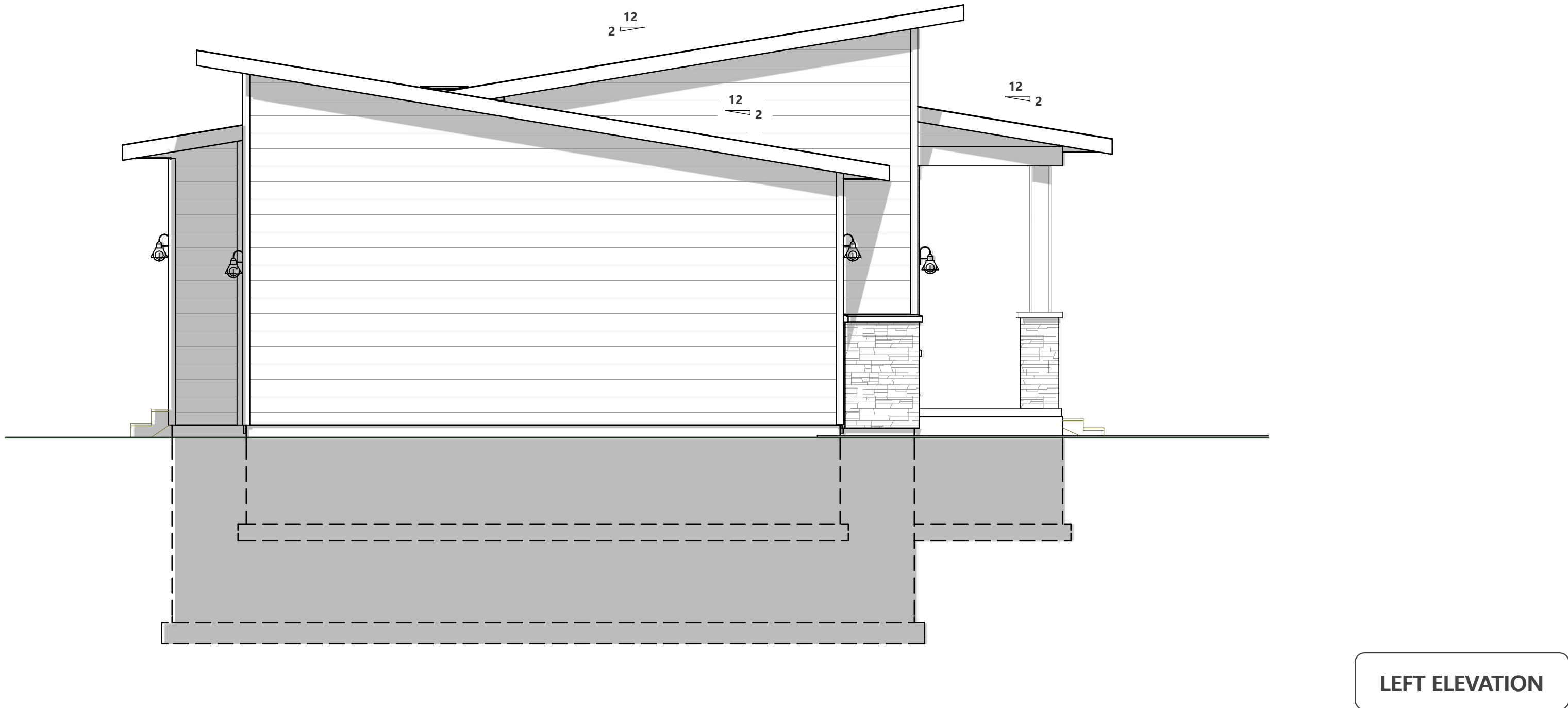
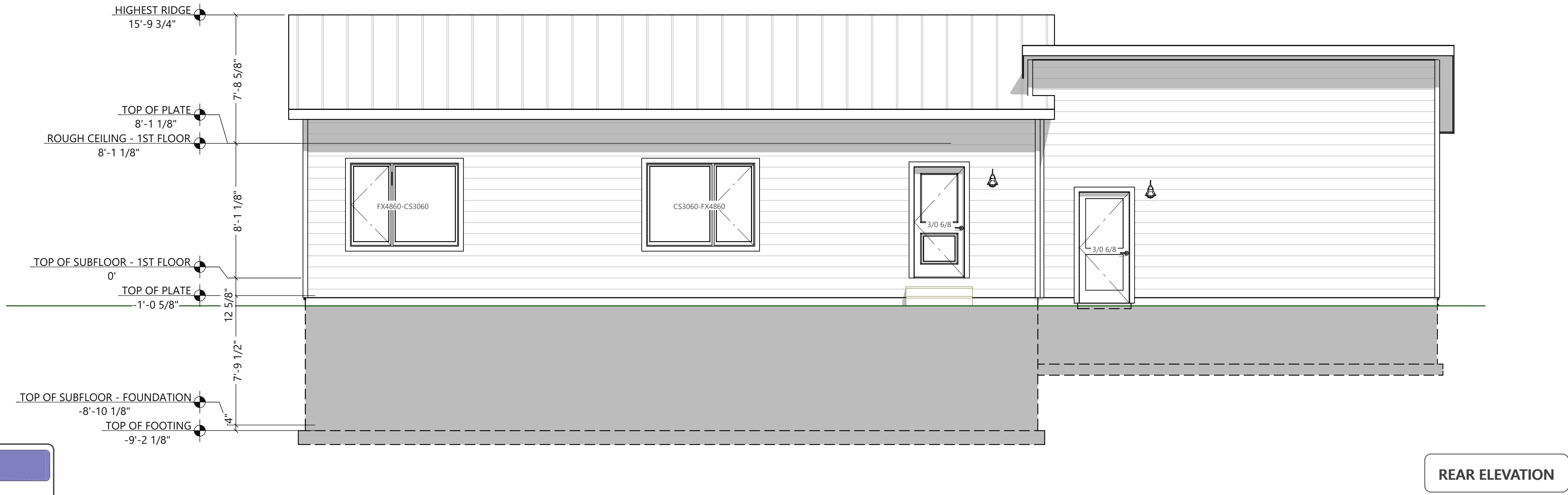
Preferred **Sub-Fascia Size**:

Preferred **Window Style** (General):
(Note any alternate window styles or grille locations on Elevations)

Preferred **Window Color**:

Preferred **Exterior Materials/Colors**:

(Please highlight and annotate desired locations on Elevations)
Other Notes:



IMPORTANT
PLAN SET VERSION IS NOT INTENDED FOR FINAL CONSTRUCTION



Obsidian

Wausau Homes Catalog Number: WN115

Wausau Homes Original Floor Plans

These drawings are protected under Wausau Homes, Inc.'s exclusive copyright and are provided under a limited license to the Wausau Homes builder reference. By accepting a copy of these drawings, you acknowledge and recognize Wausau Homes Inc.'s exclusive copyright herein and agree not to display, distribute, reproduce, modify, or use these drawings other than for the construction of a single home by Wausau Homes.



PLANNING & DESIGN

Send Design Requests to:
PlanningDesign@wausauhomes.com

For Pricing Inquiries:
SalesSupport@wausauhomes.com

SALES PLAN

Print Date:
4/8/2025

ELEVATIONS
Rear & Left

1/4" = 1'-0" (22X34)

P3

NOTES FROM THE DESIGNER:

- See Design Options pages for a possible re-configuration of the Mudroom

BUILDER SPECIFICATIONS

Preferred **Wall Height** (General):
(Annotate any special room heights on plan)

Preferred **Top of Window Height** (General):
(Annotate any special window heights on plan)

Preferred **Garage Wall Thickness**:

Zero-Step Entry @ Garage?
(Please provide preferred construction detail information)

Please list or note locations where **Tile Flooring** may be desired:

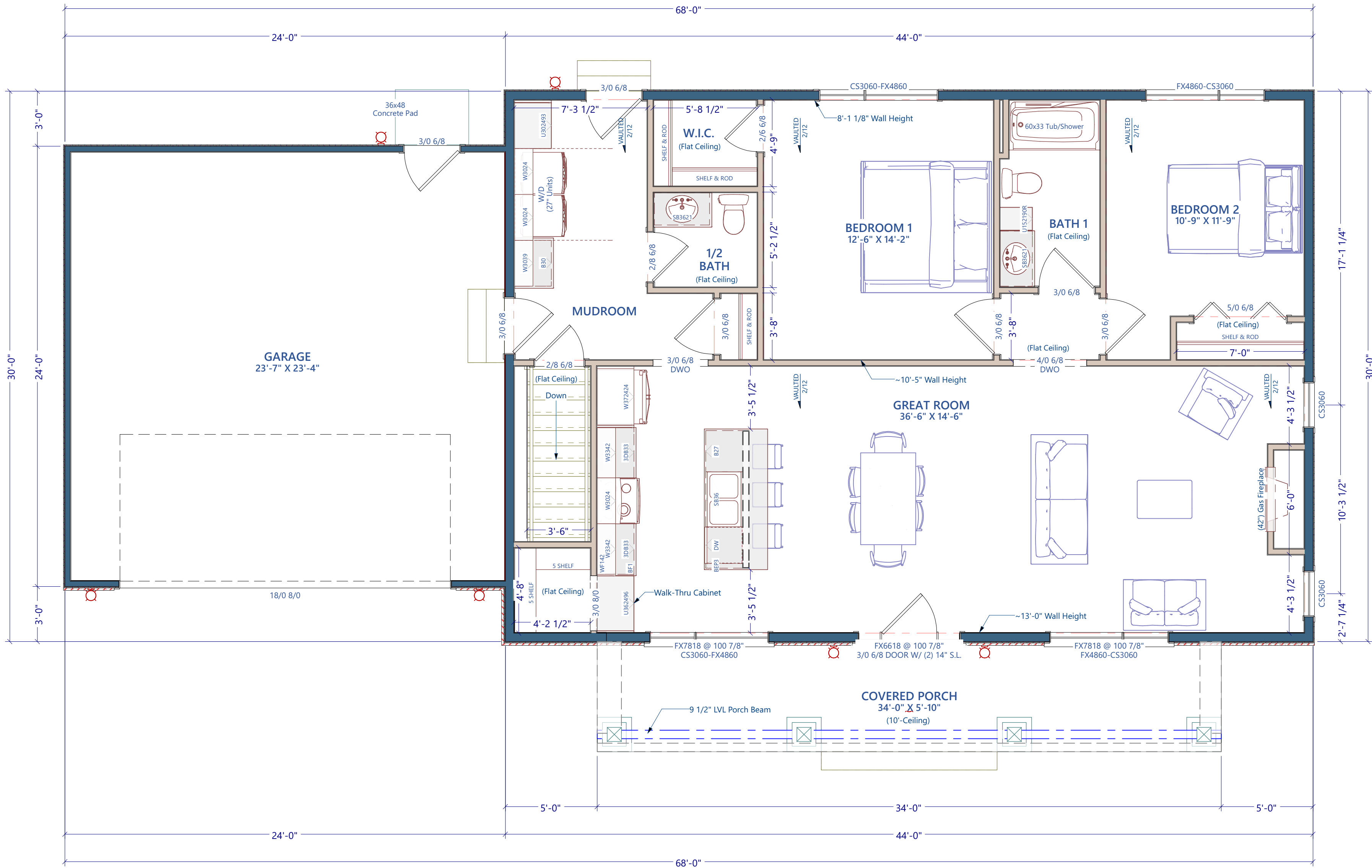
Storage Trusses? Attic Trusses?

Other Notes:

-FLOOR PLAN: MAIN LEVEL-

1320 Sq. Ft. of Living Area (includes stair opening)
576 Sq. Ft. of Garage

8'-1 1/8" Wall Heights (u.n.o.)
6'-10 7/8" Window Header Heights (u.n.o.)



IMPORTANT
PLAN SET VERSION IS NOT INTENDED FOR FINAL CONSTRUCTION



Obsidian

Wausau Homes Catalog Number: WN115

Wausau Homes Original Floor Plans

These drawings are protected under Wausau Homes, Inc.'s exclusive copyright and are provided under a limited license to the Wausau Homes builder reference. By accepting a copy of these drawings, you acknowledge and recognize Wausau Homes Inc.'s exclusive copyright herein and agree not to display, distribute, reproduce, modify, or use these drawings other than for the construction of a single home by Wausau Homes.



PLANNING & DESIGN

Send Design Requests to:
PlanningDesign@wausauhomes.com

For Pricing Inquiries:
SalesSupport@wausauhomes.com

SALES PLAN

Print Date:
4/8/2025

FLOOR PLAN:
Main Level

1/4" = 1'-0" (22X34)

P4.1

NOTES FROM THE DESIGNER:

GENERAL NOTES:

1. This floor plan represents a potential design solution based on building footprint and suggested bearing locations.

2. This layout is to be used for conceptual purposes only and is subject to necessary modifications due to site conditions and/or alternate foundation systems.

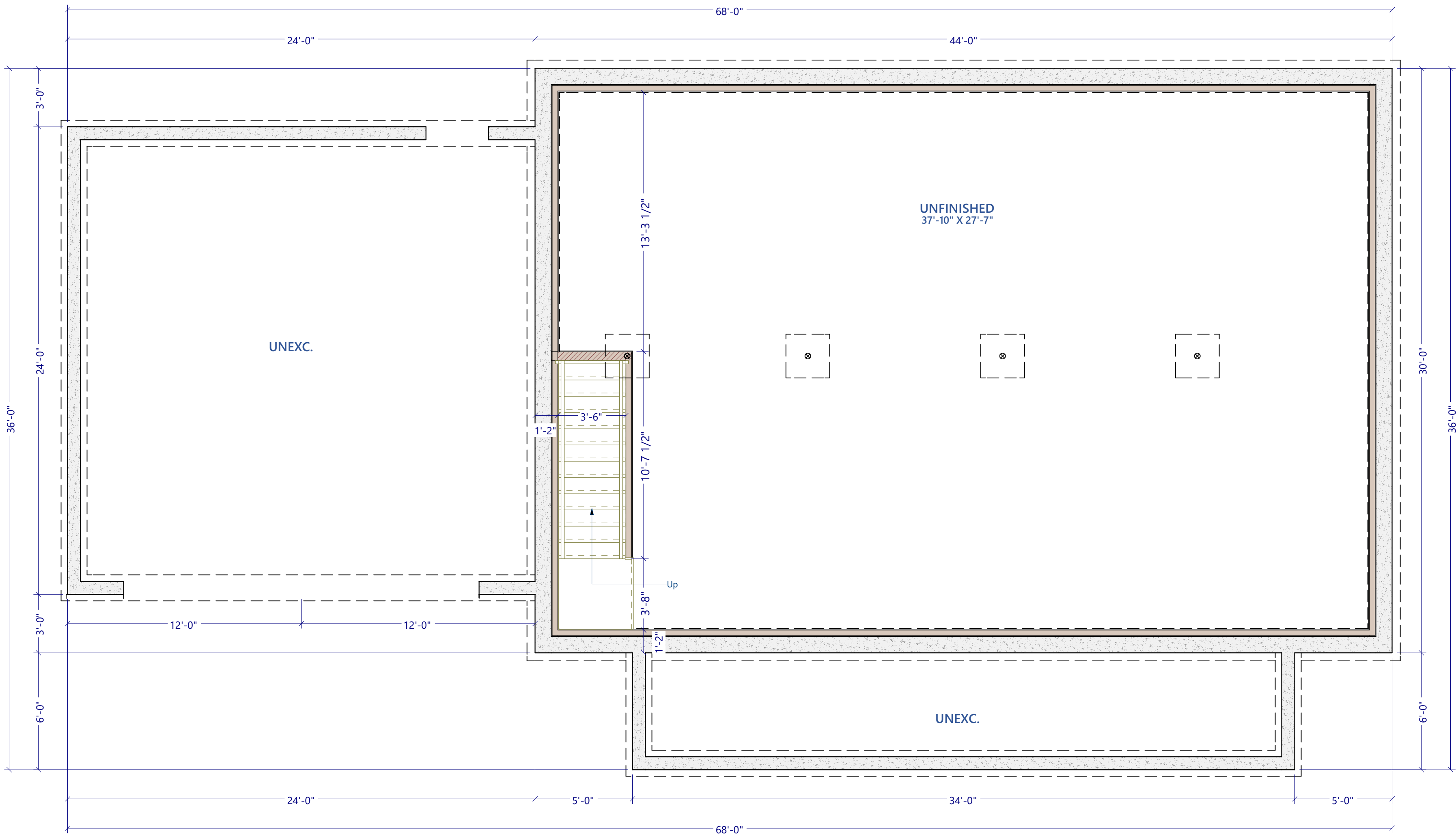
3. Lower Levels are not included with the Wausau Homes Panelized Framing System, however, material packages can be purchased through Wausau Homes. Refer to Homeowner Selection Guide for available materials and finishes.

-FLOOR PLAN: LOWER LEVEL-

Sq. Ft. of Finished Living Area: ###

8'-0" Foundation Wall Heights (u.n.o.)

10" Foundation Wall Thickness (u.n.o.)



IMPORTANT
PLAN SET VERSION IS NOT INTENDED FOR FINAL CONSTRUCTION



Obsidian

Wausau Homes Catalog Number: WN115

Wausau Homes Original Floor Plans

These drawings are protected under Wausau Homes, Inc.'s exclusive copyright and are provided under a limited license to the Wausau Homes builder reference. By accepting a copy of these drawings, you acknowledge and recognize Wausau Homes, Inc.'s exclusive copyright herein and agree not to display, distribute, reproduce, modify, or use these drawings other than for the construction of a single home by Wausau Homes.



PLANNING & DESIGN

Send Design Requests to:
PlanningDesign@wausauhomes.com

For Pricing Inquiries:
SalesSupport@wausauhomes.com

SALES PLAN

Print Date:
4/8/2025

FLOOR PLAN:
Lower Level

1/4" = 1'-0" (22X34)

P4.3

NOTES FROM THE DESIGNER:

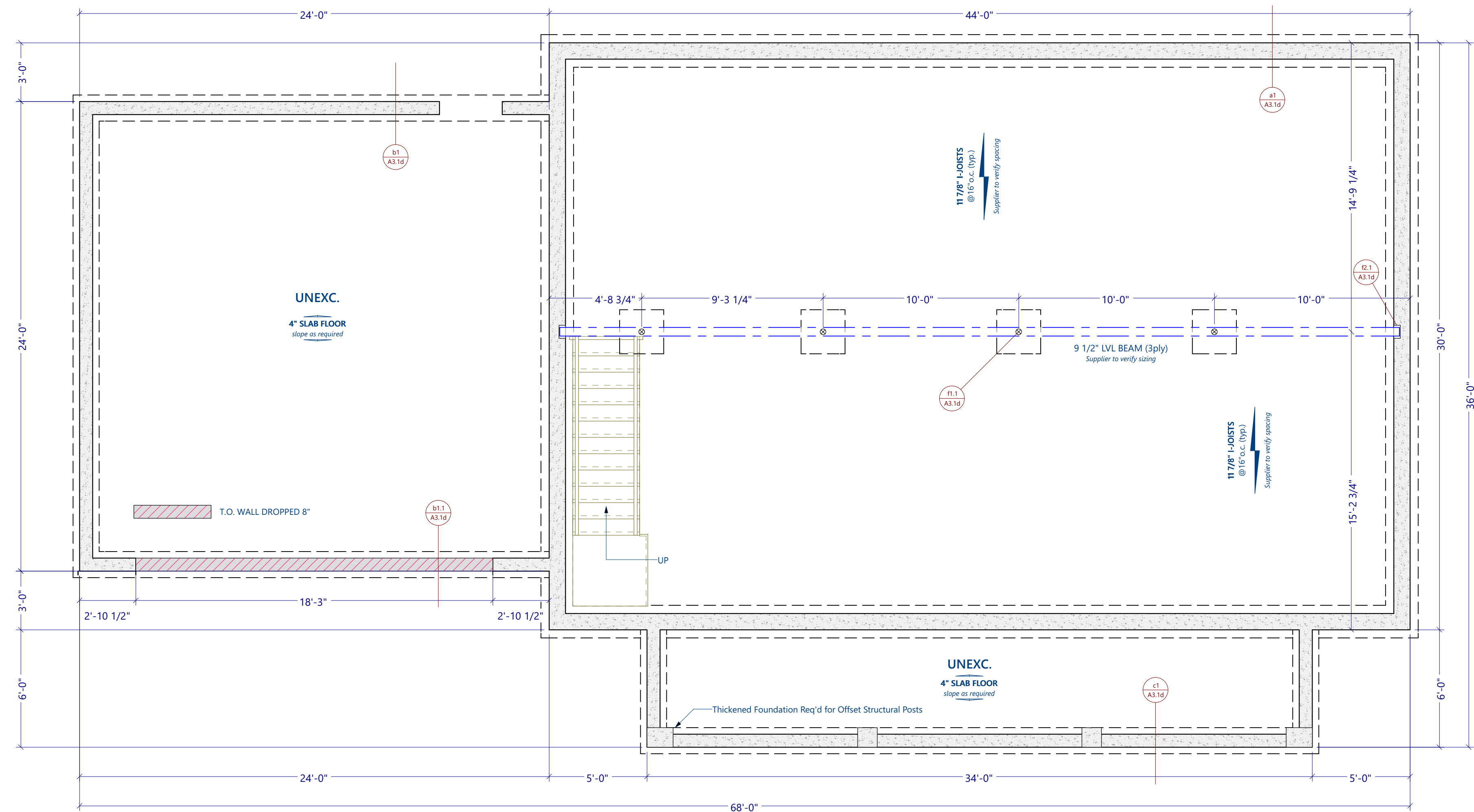
GENERAL NOTES:

1. This Drawing represents a Sample Foundation Plan for this design, using assumed wall heights, wall systems, and site conditions.
2. The purpose of this plan is to provide the end user with required bearing locations based on the home design presented, and is not to be used for Final Construction.
3. Plan changes may result in changes to required bearing and stair design.
4. Post locations shown are designed for use of a (3ply) 9 1/2" LVL Basement Beam. Alternate spacing may be considered for other beam specifications. If "Critical Posts" are noted, those locations cannot be altered regardless of beam specifications.
5. Bearing Walls may typically be used in lieu of post and beam bearing conditions. Some exceptions may apply.
6. Stairs are designed with 7 3/4" maximum riser height and 10" minimum Tread depth (typ.)

-FOUNDATION PLAN-

8'-0" Foundation Wall Height 77
10" Foundation Wall Thickness

Wall Framing to align with: Foundation Wall
(Reference section details page A3.1d)



IMPORTANT
PLAN SET VERSION IS NOT INTENDED FOR FINAL CONSTRUCTION



Obsidian

Wausau Homes Catalog Number: WN115

Wausau Homes Original Floor Plans

These drawings are protected under Wausau Homes, Inc.'s exclusive copyright and are provided under a limited license to the Wausau Homes builder reference. By accepting a copy of these drawings, you acknowledge and recognize Wausau Homes Inc.'s exclusive copyright herein and agree not to display, distribute, reproduce, modify, or use these drawings other than for the construction of a single home by Wausau Homes.



PLANNING & DESIGN

Send Design Requests to:
PlanningDesign
@wausauhomes.com

For Pricing Inquiries:
SalesSupport
@wausauhomes.com

SALES PLAN

Print Date:
4/8/2025

FOUNDATION PLAN

1/4" = 1'-0" (22X34)

P5

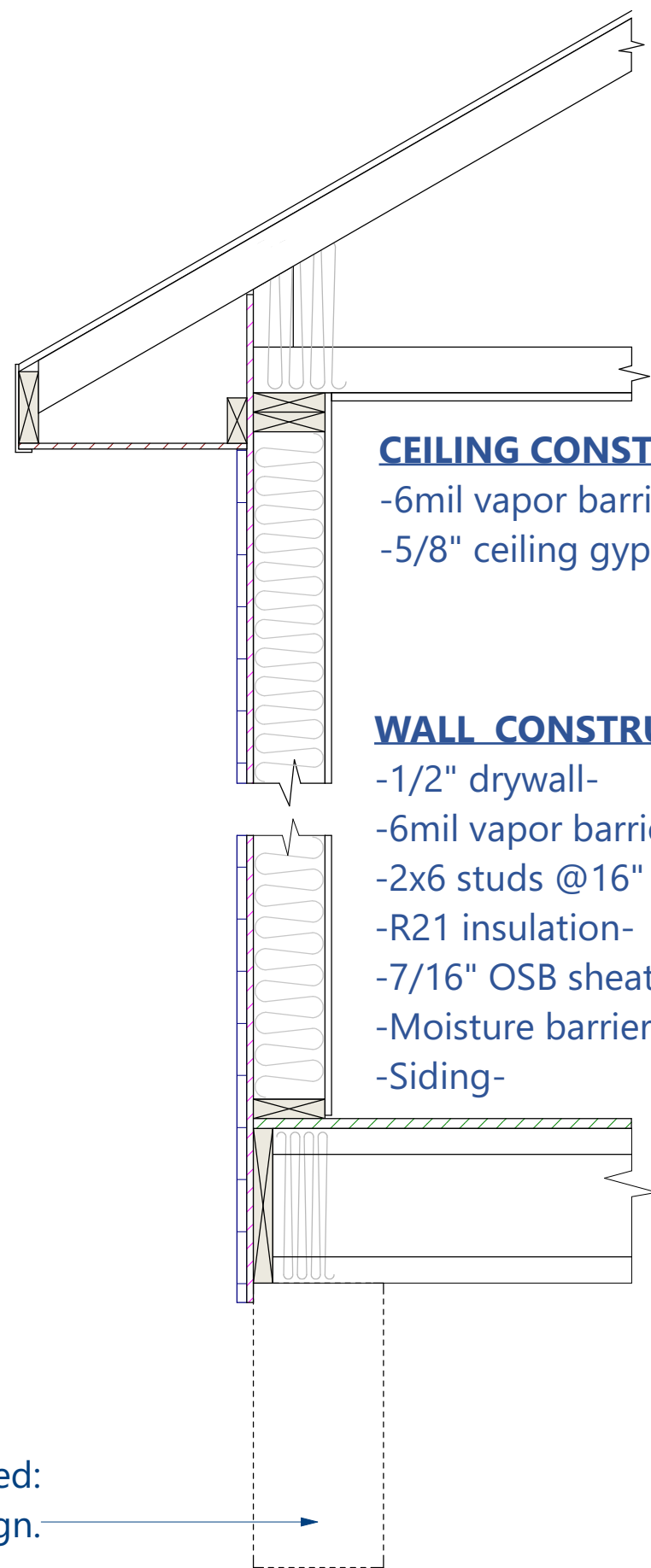
- ROOF CONSTRUCTION**
- _____ -Asphalt Shingles-
 - _____ -Ice & Water @eave edges-
 - _____ -15# felt underlayment-
 - _____ -15/32" OSB sheathing w/ clips-
 - _____ -Aluminum roof edge-

- ATTIC CONSTRUCTION**
- _____ -Engineered Roof Trusses @24" o.c. (spacing may vary as needed per design)-
 - _____ -12" Min. Energy Heel-
 - _____ -Overhangs per Elevations-
 - _____ -R50 Ceiling Insulation-

- SOFFIT CONSTRUCTION**
- _____ -2x6 subfascia-
 - _____ -Aluminum fascia-
 - _____ -Aluminum vented soffit-

- FLOOR CONSTRUCTION**
- _____ -3/4" OSB T&G Sheathing-
 - _____ -11 7/8"-I-Joists @16" o.c. (spacing may vary as needed per design)-
 - _____ -R21 Fiberglass Batt or
 - _____ 3" Spray Foam sill insulation-
 - _____ -1/2" sheetrock (not required)-

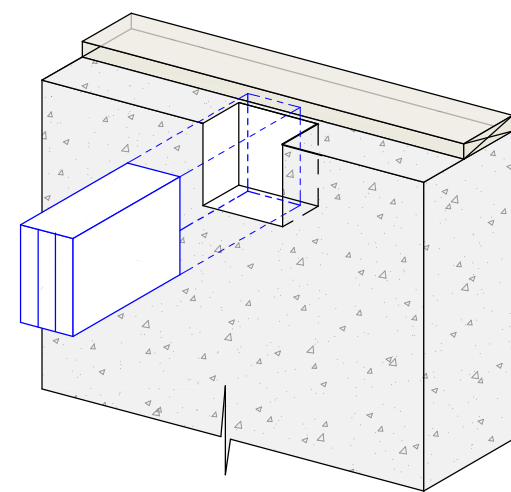
If no Foundation System information is specified:
10" Poured Concrete @96" Height wall will be used for the design.



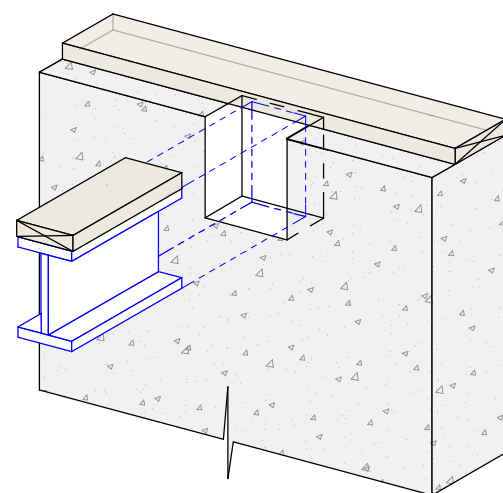
- CEILING CONSTRUCTION**
- _____ -6mil vapor barrier-
 - _____ -5/8" ceiling gyp. board-

- WALL CONSTRUCTION**
- _____ -1/2" drywall-
 - _____ -6mil vapor barrier-
 - _____ -2x6 studs @16" o.c.-
 - _____ -R21 insulation-
 - _____ -7/16" OSB sheathing-
 - _____ -Moisture barrier wrap/taped-
 - _____ -Siding-

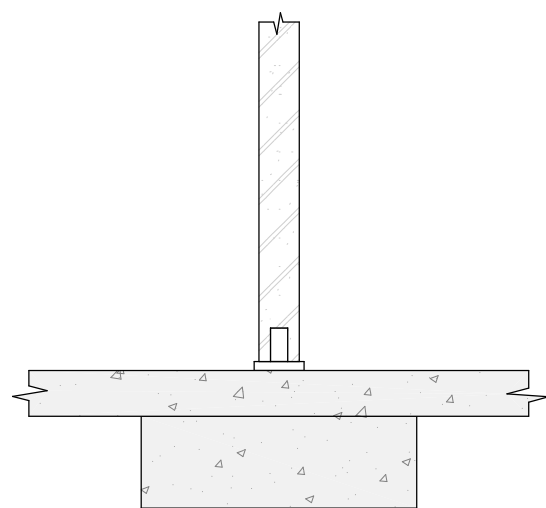
-TYPICAL BUILDING CONSTRUCTION (No Scale)-



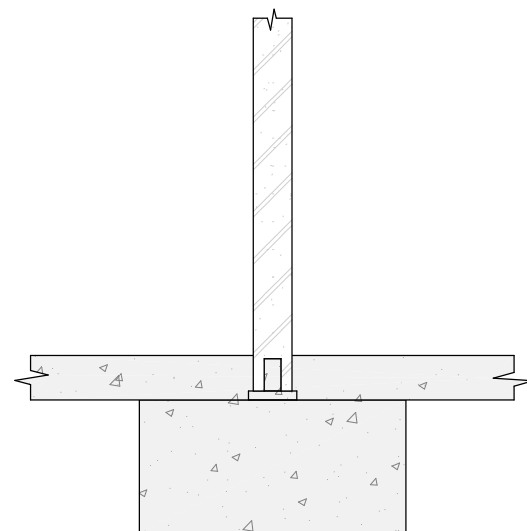
- LVL BEAM**
- _____ -3ply 9 1/2"-
 - (Detail shows default wall type)



- STEEL BEAM**
- _____ -Sized per requested design-
 - (Detail shows default wall type)

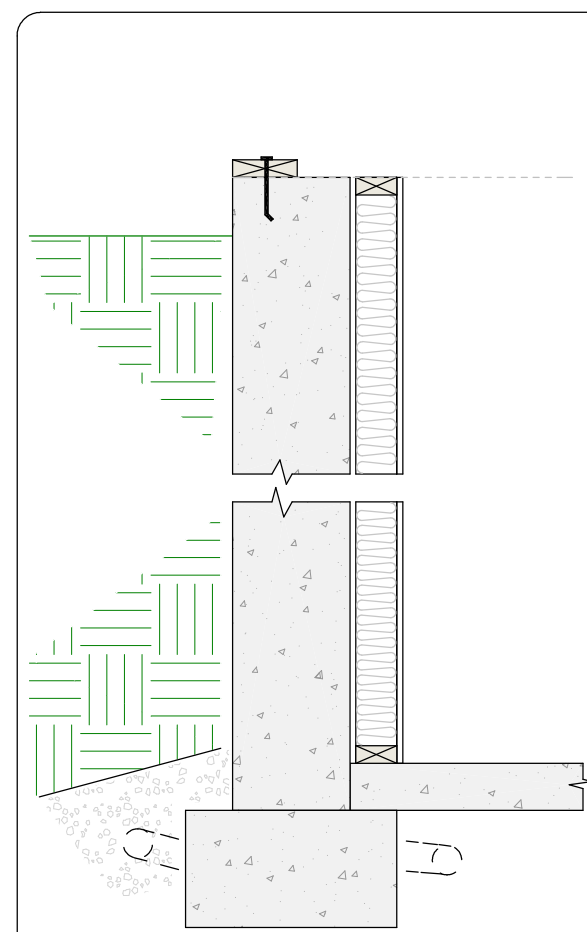


- POST FOOTINGS**
- _____ -3" Steel Post-
 - _____ -Post Sets on Slab-
 - _____ -Poured Concrete Footing, 12" Thickness-
 - (Footing sizes will vary per required loading)

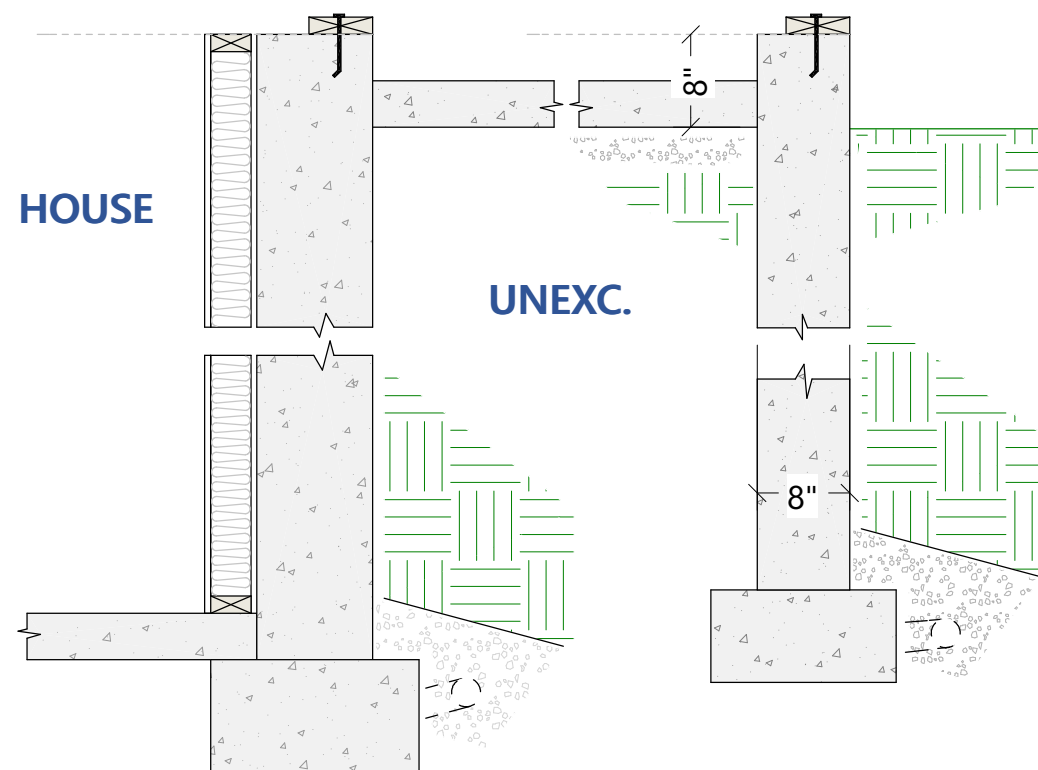


- POST FOOTINGS**
- _____ -3" Steel Post-
 - _____ -Post Sets on Footing-
 - _____ -Poured Concrete Footing, 12" Thickness-
 - (Footing sizes will vary per required loading)

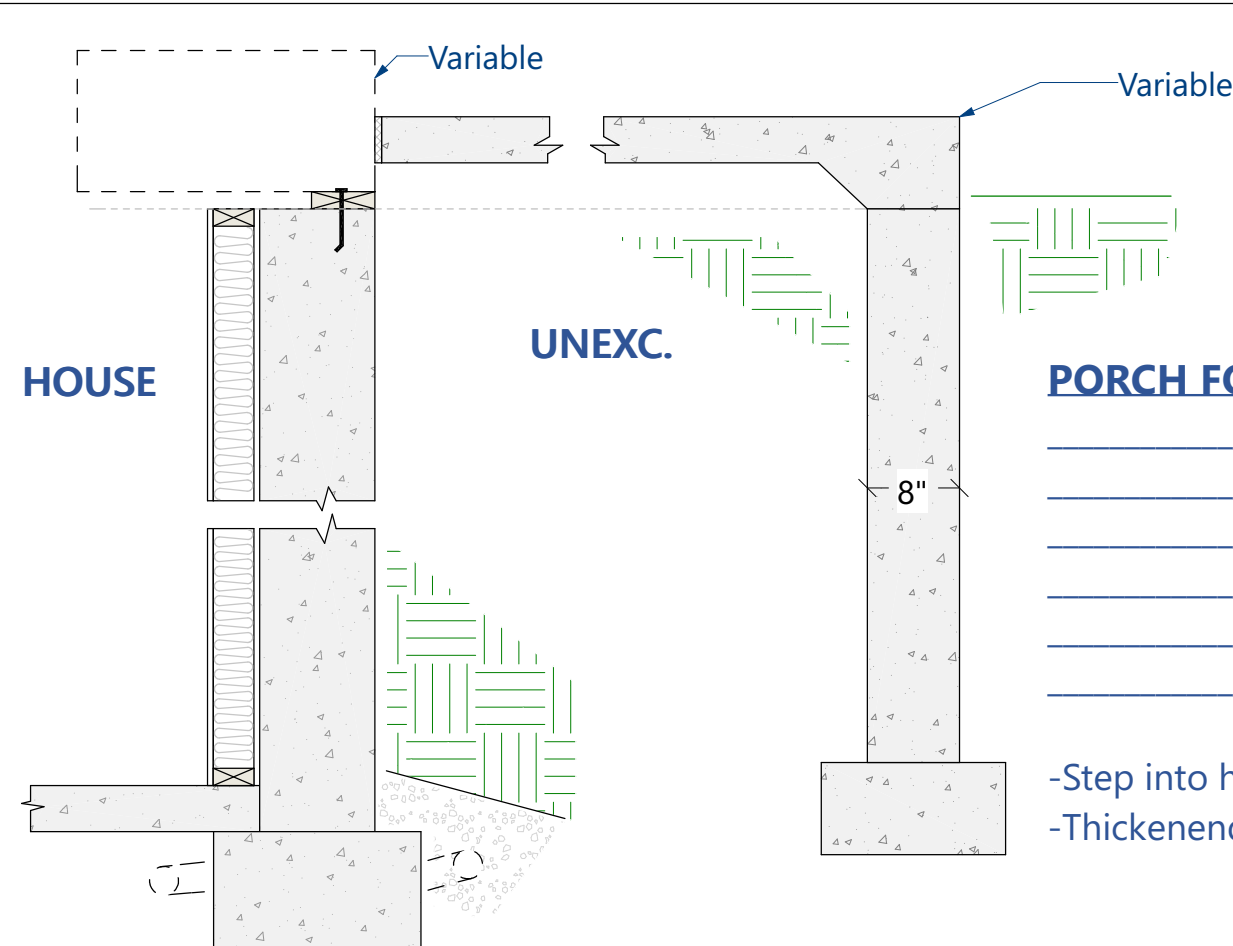
-Choose Preferred Interior Bearing (no Scale)-



- HOUSE FOUNDATION WALL**
- _____ -2x6 Pressure Treated SYP plate-
 - _____ -1/2" dia. anchor bolts @72" o.c., no more than 12" from corners-
 - _____ -Sill Sealer-
 - _____ -10" Poured Concrete Wall w/ Damp Proofing
 - _____ -96" Wall Height
 - _____ -Foam at Exterior? (Y/N) (Specify thickness)
 - _____ -R13 furring wall at Interior (Y/N)
 - _____ -4" Poured Concrete Floor-
 - _____ -6mil Poly Vapor Barrier-
 - _____ -Continuous 16"x8" Concrete Footing-
 - _____ -4" Drain tile w/ bleeders @8' o.c. covered w/ gravel aggregate-



- GARAGE FOUNDATION WALL (Attached Garage)**
- _____ -2x6 Pressure Treated SYP plate-
 - _____ -1/2" dia. anchor bolts @72" o.c., no more than 12" from corners-
 - _____ -Sill Sealer-
 - _____ -8" Poured Concrete Wall-
 - _____ -48" Wall Height-
 - _____ -Slab Ledge- (Y/N)
 - _____ -4" Poured Concrete Floor, sloped as needed-
 - _____ -6mil Poly Vapor Barrier-
 - _____ -Continuous 16"x8" Concrete Footing-
 - _____ -4" Drain tile w/ bleeders @8' o.c. covered w/ gravel aggregate-
 - _____ -8" Door Drops (top of foundation to underside of slab)-



- PORCH FOUNDATION WALL**
- _____ -8" Poured Concrete Wall
 - _____ -48" Wall Height-
 - _____ -4" Poured Concrete Floor, Thickened @Foundation Wall-
 - _____ -6mil Poly Vapor Barrier-
 - _____ -Continuous 16"x8" Concrete Footing-
 - _____ -4" Drain tile w/ bleeders @8' o.c. covered w/ gravel aggregate-
 - _____ -Step into house will vary by Floor System- (max. 7")
 - _____ -Thickenend slab dimension will vary by Floor System-

-TYPICAL FOUNDATION CONSTRUCTION (no Scale)-

Materials shown will be used as design defaults, unless otherwise specified.
Please write in desired building materials if different than what is shown.

IMPORTANT
PLAN SET VERSION IS NOT INTENDED FOR FINAL CONSTRUCTION



www.MausauHomes.com

Obsidian

Mausau Homes Catalog Number: WN115

Mausau Homes Original Floor Plans

These drawings are protected under Mausau Homes, Inc.'s exclusive copyright and are provided under a limited license to the Mausau Homes builder reference. By accepting a copy of these drawings, you acknowledge and recognize Mausau Homes Inc.'s exclusive copyright herein and agree not to display, distribute, reproduce, modify, or use these drawings other than for the construction of a single home by Mausau Homes.



PLANNING &
DESIGN

Send Design Requests to:
PlanningDesign@mausauhomes.com

For Pricing Inquiries:
SalesSupport@mausauhomes.com

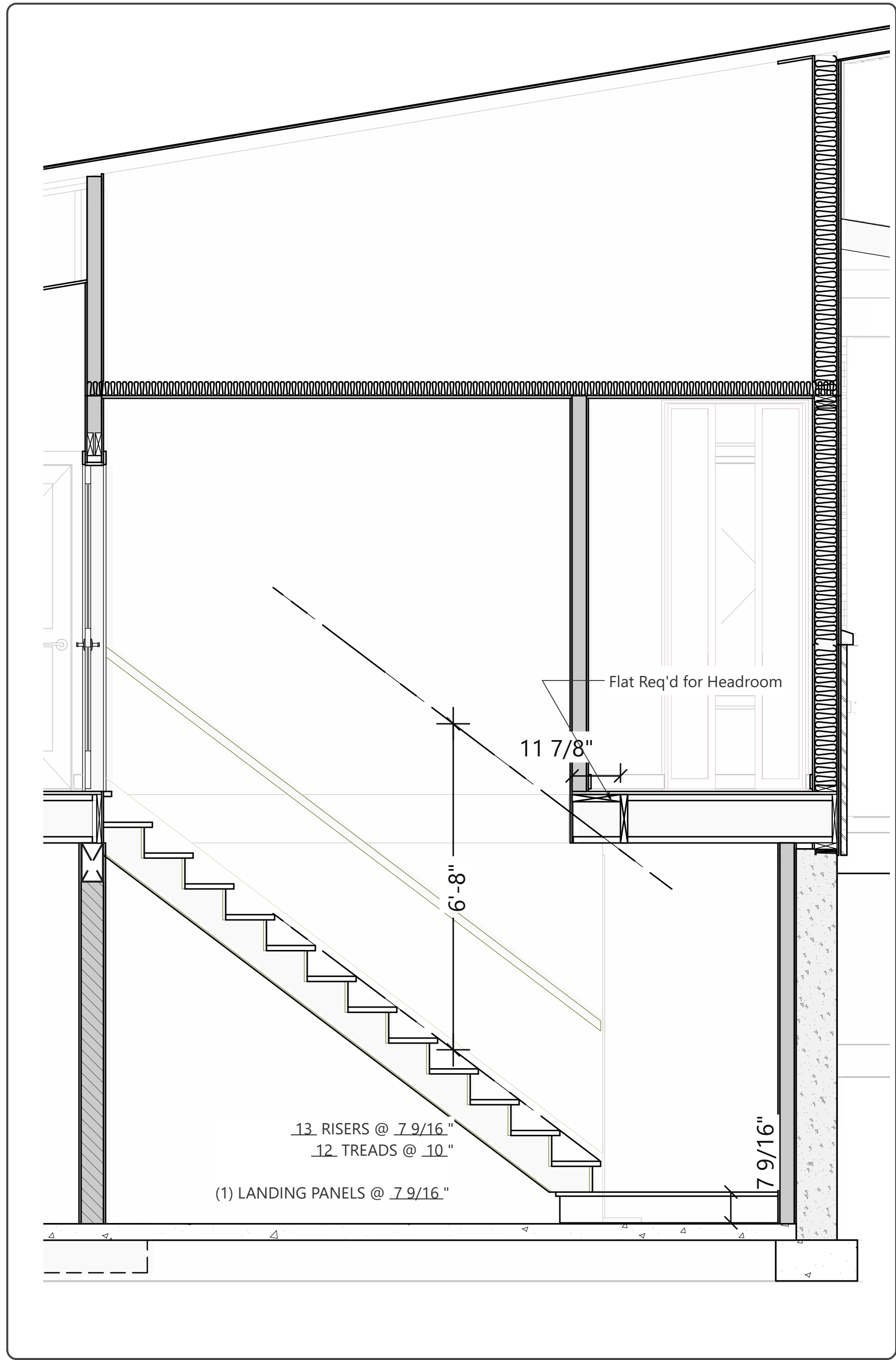
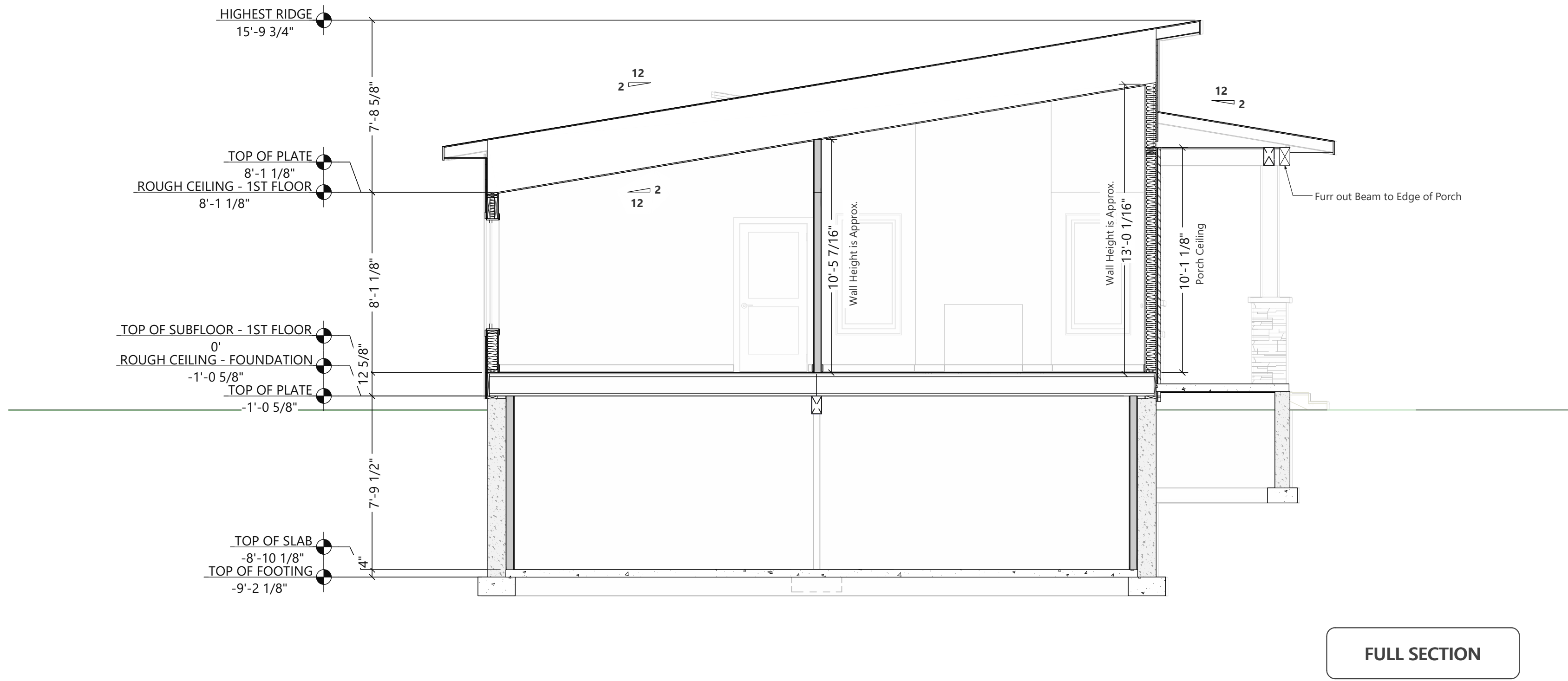
SALES PLAN

Print Date:
4/8/2025

CONSTRUCTION
DETAILS

1/4" = 1'-0" (22X34)

P5.1



IMPORTANT
PLAN SET VERSION IS NOT INTENDED FOR FINAL CONSTRUCTION



Obsidian

Wausau Homes Catalog Number: WN115

Wausau Homes Original Floor Plans

These drawings are protected under Wausau Homes, Inc.'s exclusive copyright and are provided under a limited license to the Wausau Homes builder reference. By accepting a copy of these drawings, you acknowledge and recognize Wausau Homes, Inc.'s exclusive copyright herein and agree not to display, distribute, reproduce, modify, or use these drawings other than for the construction of a single home by Wausau Homes.



PLANNING & DESIGN

Send Design Requests to:
PlanningDesign@wausauhomes.com

For Pricing Inquiries:
SalesSupport@wausauhomes.com

SALES PLAN

Print Date:
4/8/2025

BUILDING SECTION

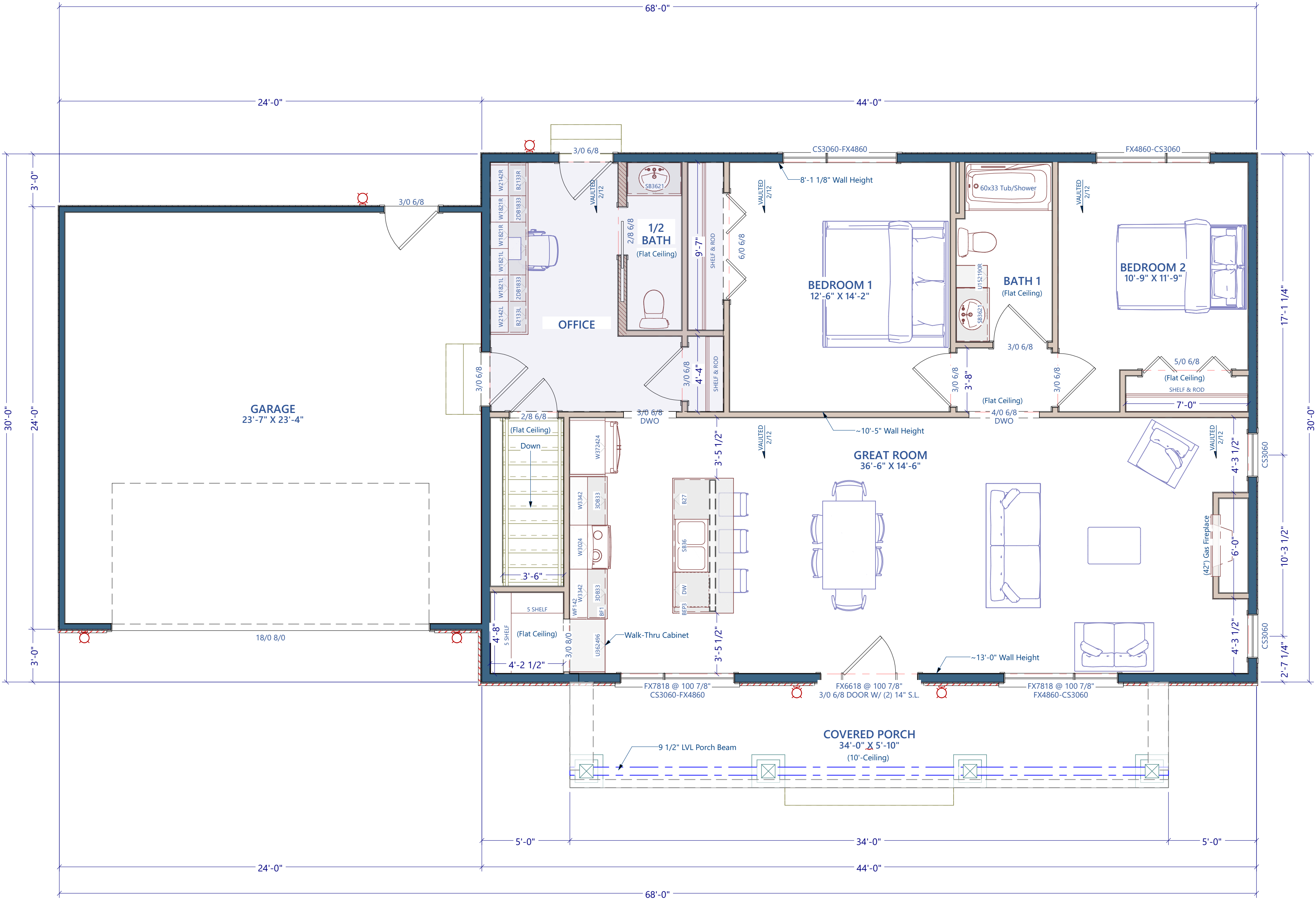
1/4" = 1'-0" (22X34)

P6

FEATURED DESIGN OPTIONS

(Available for Quick Pricing Estimate)

- Main Floor Office (Laundry Room moved to basement)
- Alternate closet and 1/2 Bath configuration @Bedroom 1



IMPORTANT
PLAN SET VERSION IS NOT INTENDED FOR FINAL CONSTRUCTION



Obsidian

Wausau Homes Catalog Number: WN115

Wausau Homes Original Floor Plans

These drawings are protected under Wausau Homes, Inc.'s exclusive copyright and are provided under a limited license to the Wausau Homes builder reference. By accepting a copy of these drawings, you acknowledge and recognize Wausau Homes Inc.'s exclusive copyright herein and agree not to display, distribute, reproduce, modify, or use these drawings other than for the construction of a single home by Wausau Homes.



PLANNING & DESIGN

Send Design Requests to:
PlanningDesign@wausauhomes.com

For Pricing Inquiries:
SalesSupport@wausauhomes.com

SALES PLAN

Print Date:
4/8/2025

DESIGN OPTIONS

1/4" = 1'-0" (22X34)

P7.1